



POLY PANEL EPS INSULATION

Save Energy, Save Money, Insulate Your Basement Walls

Cellofoam Poly Panel is an insulation board that may significantly reduce energy costs by adding R-value to your interior, unfinished, basement walls. Poly Panel was specifically designed many years ago (note retro marketing image at page bottom) for applying directly to basement wall concrete masonry between standard 2 x 4 studs on 16-inch centers or nominal 2-inch furring strips, and is still commonly used today to lower heating bills. Each package of Poly Panel contains 6 sheets of $\frac{3}{4}$ " x 14 $\frac{1}{2}$ " x 48" insulation. When installed between 2 x 4 studs or nominal 2-inch furring strips, one package will cover 32 square feet.

Cellofoam Poly Panel is made of premium expanded polystyrene (EPS) rigid insulation that meets or exceeds the requirements of ASTM C578, *Standard Specification for Rigid, Cellular Polystyrene Thermal Insulation*. The EPS is composed of closed cells with excellent dimensional stability, compressive strength, and water resistance.

ADVANTAGES

Cost Savings: EPS reduces energy costs and offers the highest R-value per dollar of any foam insulation board. Poly Panel is lightweight and easy to install, with adhesive or a friction fit.

Code Approvals: Underwriters Laboratory Listed, UL ER7260, for interior and walls. Please consult local building codes for system requirements and modern basement moisture management building techniques. Insulation must be separated from living areas by an approved thermal barrier of 0.5-inch gypsum wallboard or equivalent.

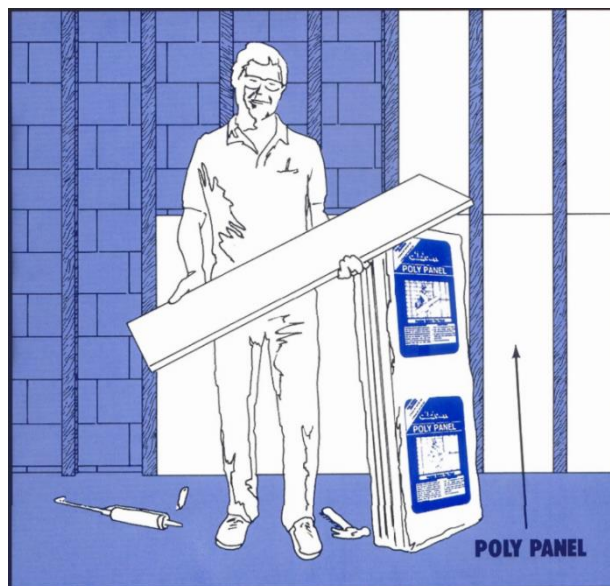
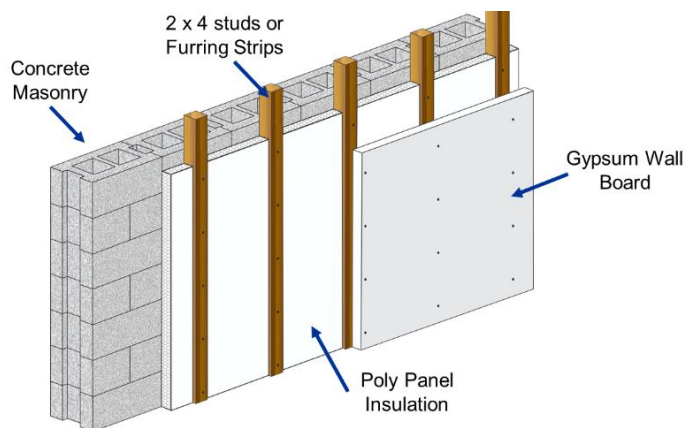
Stable R-value: A single layer of Cellofoam Poly Panel contributes an R-value of 2.9 at 75 deg F and 3.1 at 40 deg F. The R-value of EPS is permanent because the only gas in EPS is air. Unlike Polyiso or XPS whose blowing agents outgas and therefore lose R-value, EPS R-values do not degrade over decades of use.

Moisture Resistant: Cellofoam EPS is quick drying and does not readily absorb moisture from the air. Its closed-cell structure reduces the absorption and migration of moisture. Not a vapor barrier.

Premium Quality: Meets or exceeds ASTM C578 specifications. When properly installed it does not deteriorate with age, and is resistant to mildew, rot, fungus, and bacteria.

Environmentally Friendly: Cellofoam EPS contains no formaldehyde or ozone-depleting CFCs or HCFCs. Its EPS core is 100% recyclable and may contain recycled material.

Size: Each package of Poly Panel contains 6 sheets of $\frac{3}{4}$ " x 14 $\frac{1}{2}$ " x 48" insulation. When installed between 2 x 4s or nominal 2-inch furring strips, one package will cover 32 square feet. A narrower width 13 $\frac{5}{8}$ " variation may be special ordered for 4-inch nominal framing at 16" centers.





POLY PANEL EPS INSULATION

Poly Panel Typical Physical Properties

Physical Properties	Units	ASTM Test	Typical Values ¹ ASTM C578 Type I
Density (Nominal)	lb/ft ³	C303 or	1.0
Density (Minimum)	lb/ft ³	D1622	0.90
Thermal Resistance			
R-Value ² at 25°F	(°F ft ² hr) / Btu per inch	C177 or C518	4.35
at 40°F			4.17
at 75°F			3.85
Compressive Strength at 10% deformation	psi	D1621	10 - 14
Flexural Strength	psi	C203	25 - 30
Water Vapor Permeance 1.0 in. thickness	perm.	E96	2.0 - 3.0
Water Absorption by total immersion	volume %	C272 or C1763	< 1.5
Capillarity	--	--	none
Dimensional Stability maximum	change %	D2126	< 0.5
Coefficient of Thermal Expansion	in/(in °F)	D696	0.000035
Fungus & Bacterial Resistance	-	C1338	Will not support bacterial or fungus growth; no food value

¹ Typical physical properties are based on data provided by resin manufacturer, independent test agencies, and Cellofoam North America Inc. All data is for plain, un laminated EPS foam.

² R means resistance to heat flow. The higher the R value, the greater the insulating power.

Other Uses



Conyers, GA

1917 Rockdale Industrial Blvd.
Conyers, GA 30012

Orlando, FL

11237 Astronaut Blvd.
Orlando, FL 32837

Sallisaw, OK

1330 W. Redwood Ave
Sallisaw, OK 74955

Whiteland, IN

150 Crossroads Drive
Whiteland, IN 46184

Winchester, VA

326 McGhee Road
Winchester, VA 22603

800-468-3626

www.cellofoam.com

Warning: This product is combustible and if exposed to a fire of sufficient heat and intensity may burn rapidly. It should not be left exposed or inadequately protected. Protect Cellofoam expanded polystyrene from exposure to hydrocarbons, coal tar pitch, solvents, and solvent fumes. Consult specific instructions and applicable building codes for use of this product.

Cellofoam North America Inc. is an expanded polystyrene foam manufacturer and not an engineering consulting firm. Thus, it is beyond our scope to provide design services on the specific use for our products. Users of our EPS products such as Poly Shield should consult with appropriate engineering and code experts to determine the exact type and specifications of EPS required for their project. The sale of these products shall be subject to Terms and Conditions of Sale, including those limiting warranties as set forth in Cellofoam's invoices. No agent, employee, or representative of Cellofoam North America Inc. or its subsidiary or affiliated companies is authorized to modify this disclaimer.